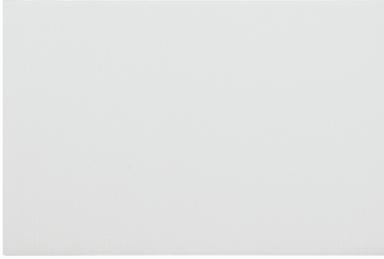


BIG CHECKS

Assembly Instructions | R1.020924

ASSEMBLY HARDWARE

A.

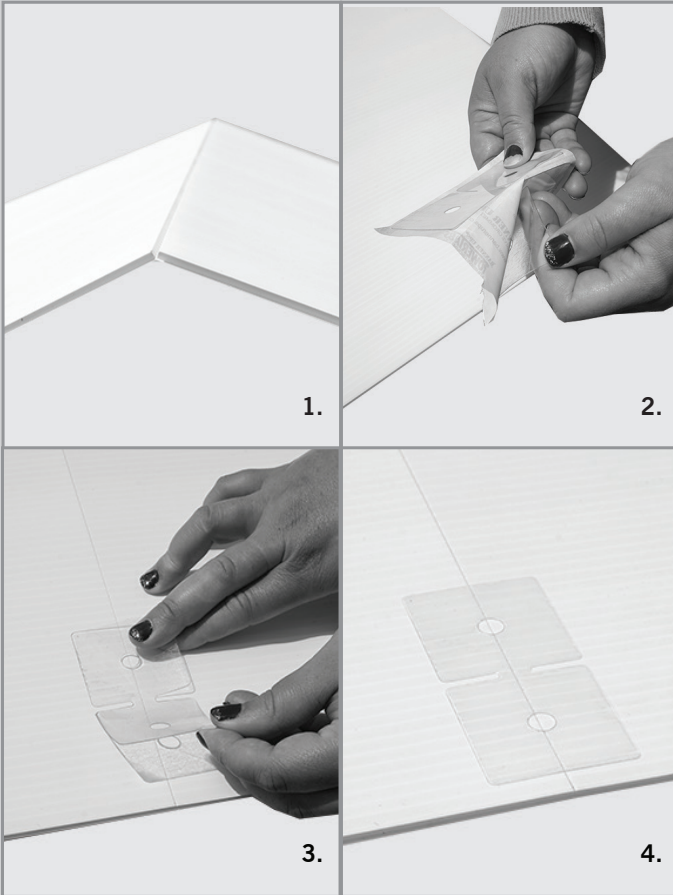


A. Custom Printed Check
B. Adhesive Tabs (2)

B.



ASSEMBLY



1. Unfold the check and place it face down.
2. Peel the back off the adhesive tabs.
3. Apply the adhesive tab, vertically, over the seam on the back of the check. The adhesive tab should be about a half inch to an inch from the top of the check.
4. Press down and make sure the adhesive tab is secure. Repeat for the second adhesive tab. The adhesive second tab should be about a half inch to an inch from the bottom. Then your check is ready to use!