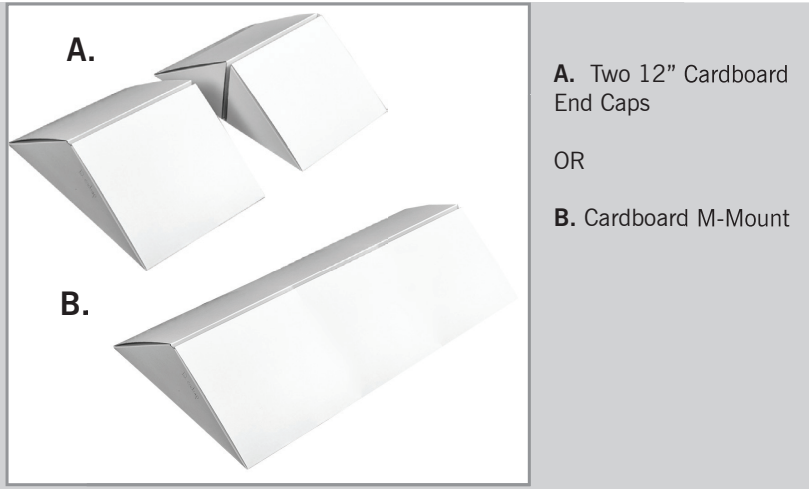


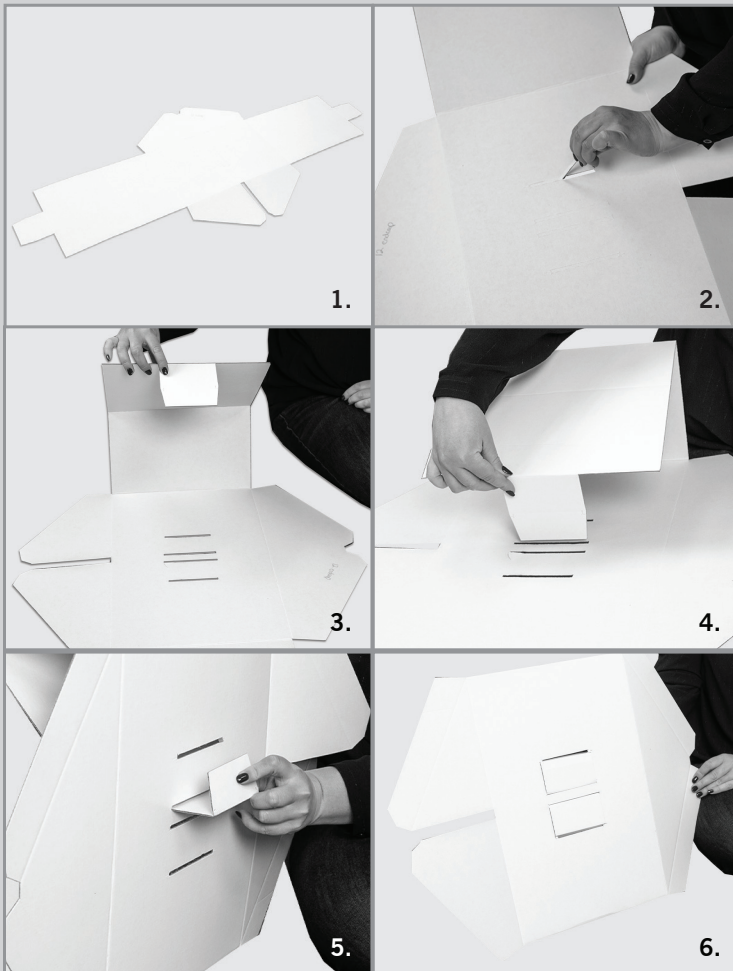
# CARDBOARD M MOUNT

Assembly Instructions | R1.020124

## ASSEMBLY HARDWARE



## ASSEMBLY



1. Unfold the cardboard m-mount until it is flat.
2. Remove the perforated pieces in the middle of the m-mount.
3. Fold the tabs at the end in towards the holes.
4. Feed the first tab into the second hole towards it.
5. Once the tab is all the way through the first hole, bend the tab where it is perforated and feed it through the hole closes to it.
6. Repeat these steps for the other side.



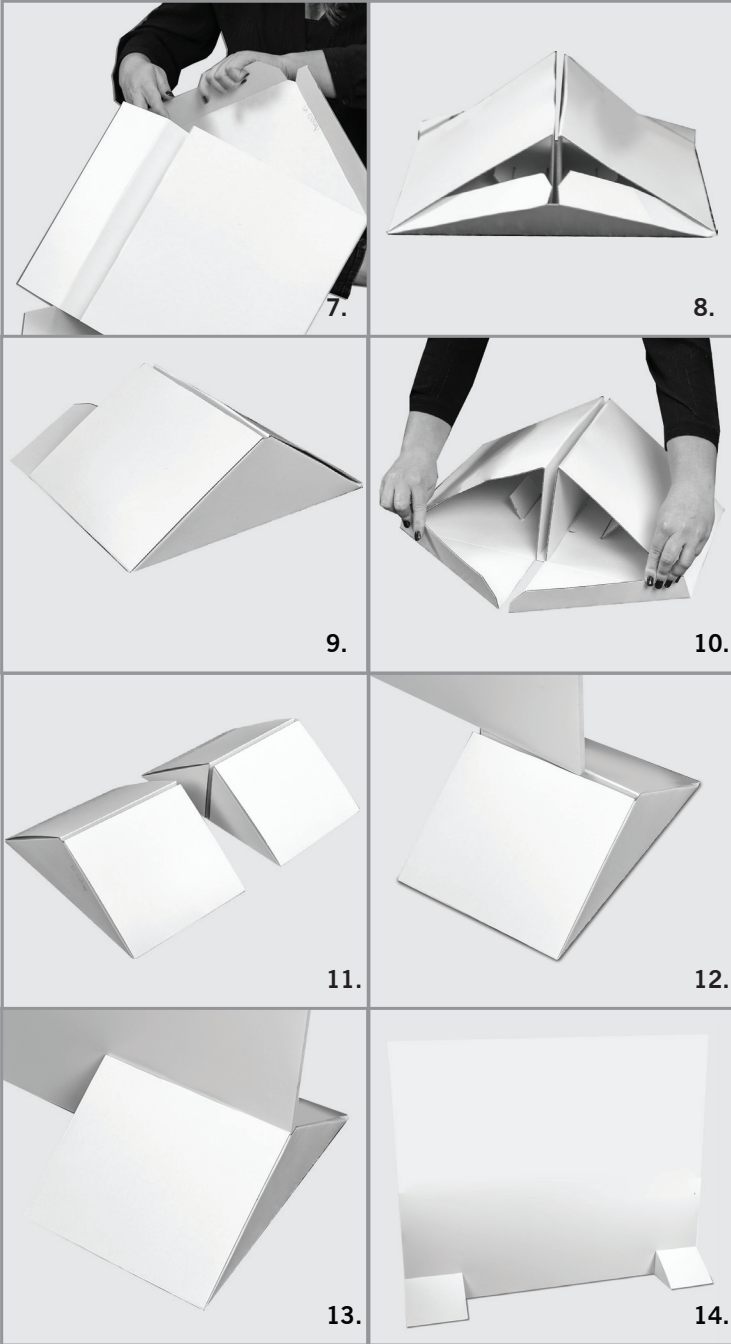
The 12" base is recommended for 12" (W) x 12"-72" (H) signs. The 24" base is recommended for 24" (W) x 12"-72" (H) signs. The 30" base is recommended for 30" (W) x 12"-72" (H) signs. All Mightee Mount sign bases accommodate up to 1/5" thick rigid signs.



# CARDBOARD M MOUNT

Assembly Instructions | R1.02012024

## ASSEMBLY



7. Turn the m-mount towards you, gently pull the flap towards you and away from the m-mount.

8. Crease the flaps and fold them into the m-mounts opening.

9. The flaps will go into the hardware and make a flat side.

10. Repeat those steps for the opposite side.

11. The hardware is ready to display a print.

12. Gently add your ridged print to the opening at the top of the m-mount. If you are using the end caps, it is easier to slide the print in from the side that is open. If you have a regular cardboard m-mount, open the sides slightly to make it easier to get the print in.

13. For end caps, push the print all the way to the side. For the regular m-mounts, close the sides so the mount is tightly against the print.

14. Your cardboard m-mount and print are ready to use!



The 12" base is recommended for 12" (W) x 12"-72" (H) signs. The 24" base is recommended for 24" (W) x 12"-72" (H) signs. The 30" base is recommended for 30" (W) x 12"-72" (H) signs. All Mightee Mount sign bases accommodate up to 1/5" thick rigid signs.

