

SPIRIT FLAG

Assembly Instructions | R1.012424

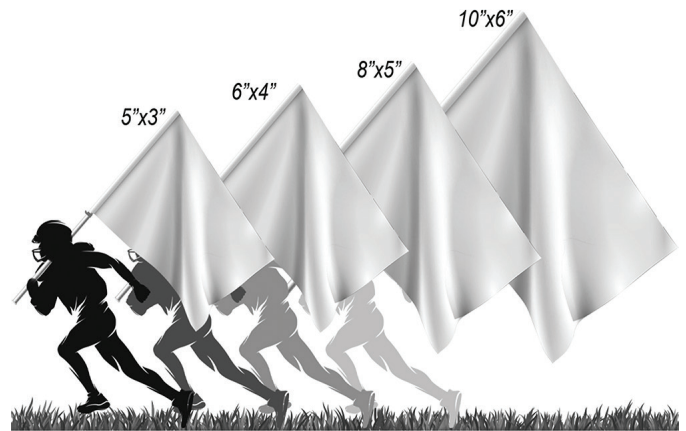
ASSEMBLY HARDWARE

A.

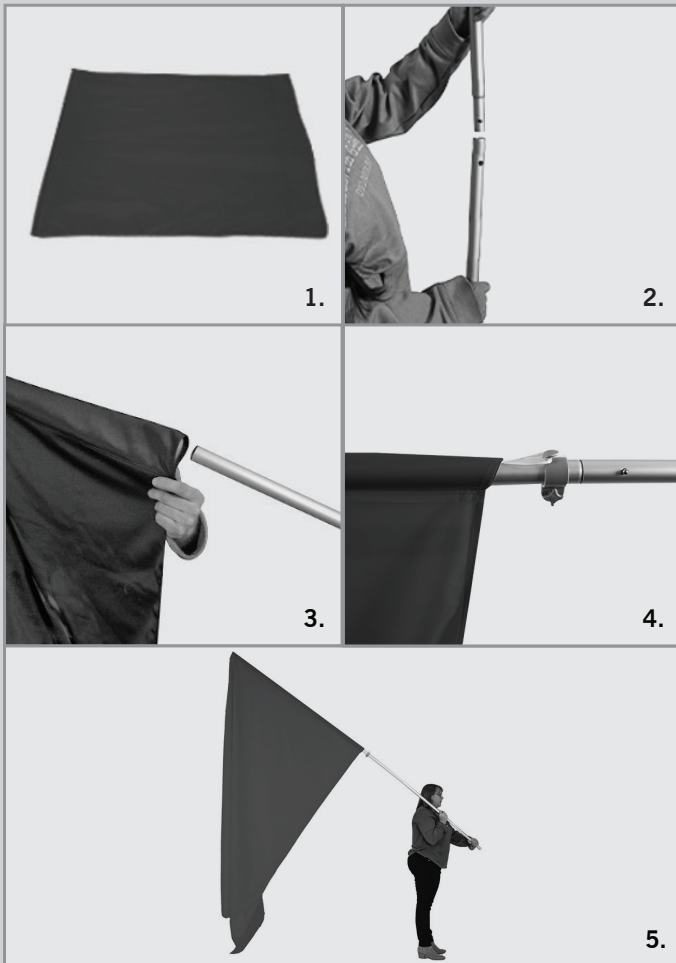


B.

A. Carrying Case
B. Poleset



ASSEMBLY



1. Lay the spirit flag out on a flat surface. Be sure to avoid any surfaces with sharp corners or poking objects that could damage the polyester material.

2. Assemble the handheld pole by connecting the pole sections together using the push buttons located on the male and female ends. Make sure the poles are connected securely before moving to the next step.

3. Gently insert the assembled aluminum pole into the cheer flag's pole pocket. Make sure the pole is completely inserted before moving to the next step.

4. Secure the flag to the pole by connecting the flag's loop to the plastic hook located on the pole. Securing the flag to the pole ensures the flag will stay in place and not fly off during windy weather.

5. Hold the flagpole upright and you are ready for on-field display! Because the flag is secured to the pole with a securing loop, the flag will stay in place until you are ready to remove it.