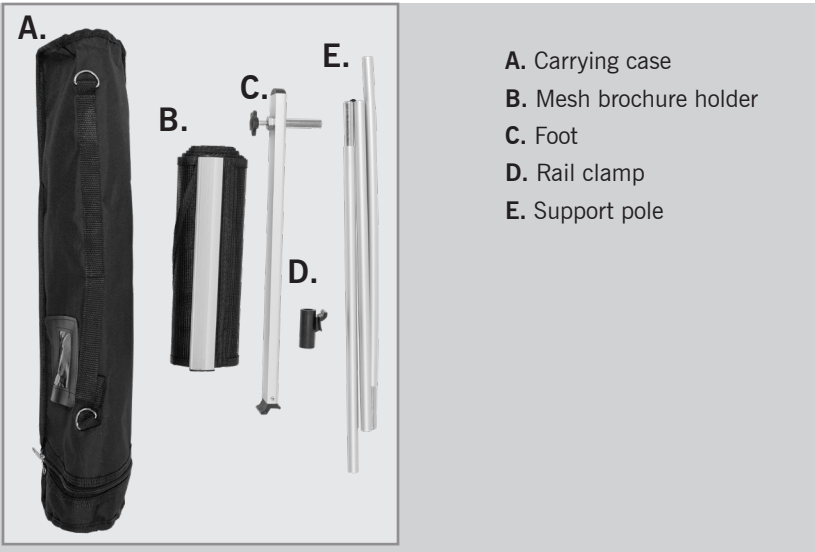


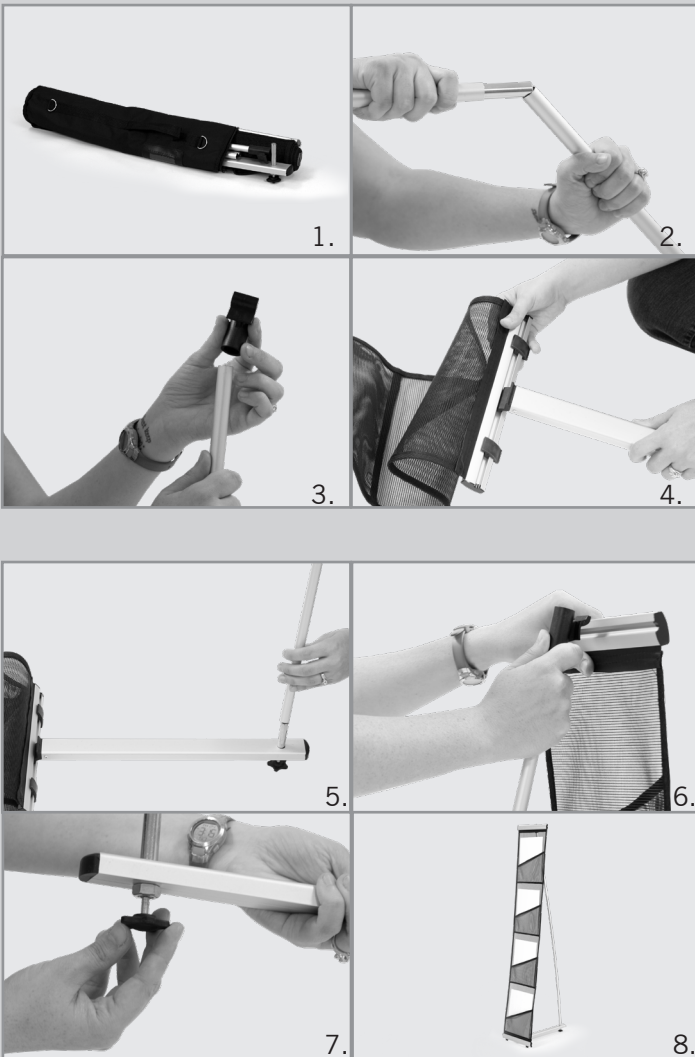
# ROLL OUT BROCHURE HOLDER BASIC

Assembly Instructions | R1.051818

## ASSEMBLY HARDWARE



## ASSEMBLY



1. Remove all contents from the case.
2. Connect the segments of the three-part support pole together to form a straight pole.
3. Attach the rail clamp to the top of the assembled support pole.
4. Connect the brochure holder and foot by sliding the foot into the bottom channel of the brochure holder.
5. Place the bottom of the pole onto the peg on the foot.
6. Unroll the brochure holder and place the top rail clamp into the channel on the top rail. You may need to bend the pole slightly to complete this step.
7. If the display needs leveling, adjust the screw on the bottom of the foot.
8. The mesh brochure holder is now assembled.