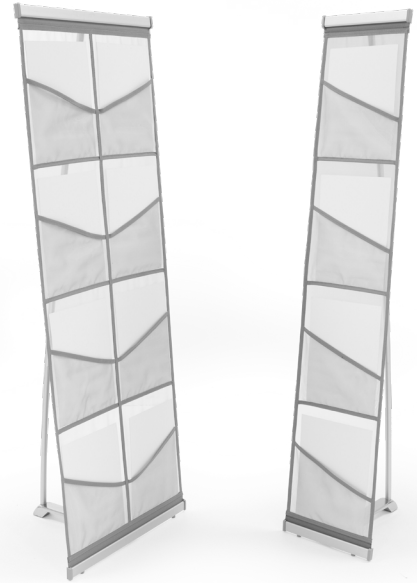
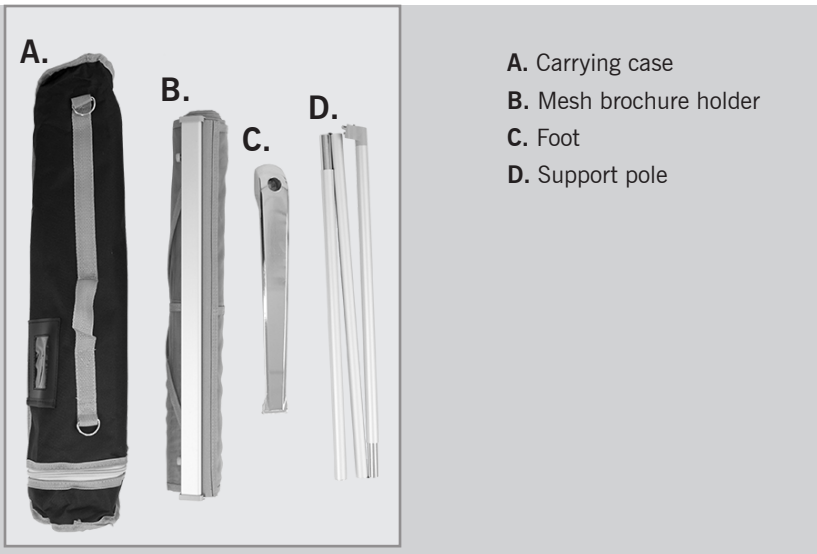
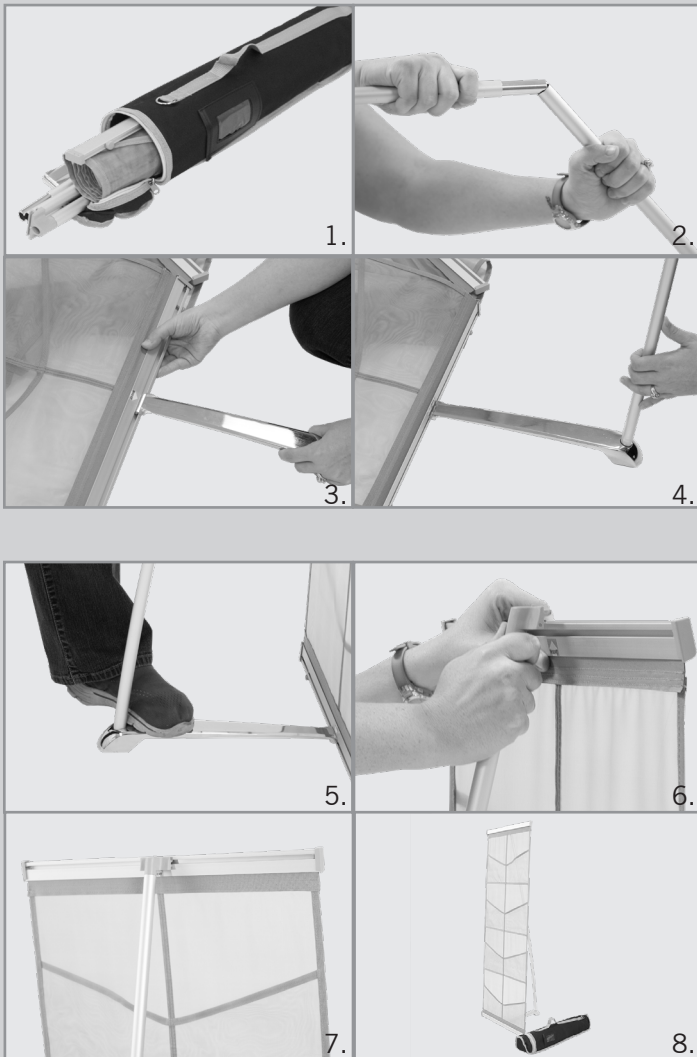


# ROLL OUT BROCHURE HOLDER DELUXE Assembly Instructions | R1.051818

## ASSEMBLY HARDWARE



## ASSEMBLY



1. Remove all contents from the case.
2. Connect the segments of the three-part support pole together to form a straight pole.
3. Connect the brochure holder and foot by sliding the foot into the bottom channel of the brochure holder.
4. Place the bottom of the assembled support pole into the notch on the foot.
5. To keep everything stable, press your foot against the base to keep the brochure holder on the ground.
6. Unroll the brochure holder and push forward on the support pole to bring it closer to the clamping rail.
7. Make sure the bar is centered and insert it into the top clamping rail.
8. The mesh brochure holder is now assembled.