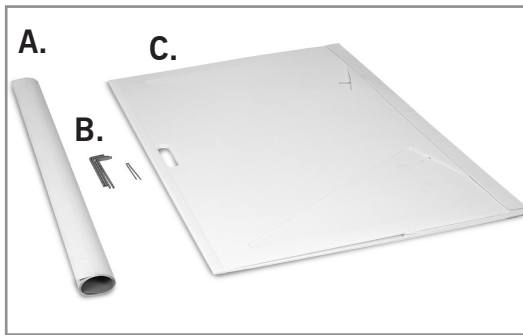


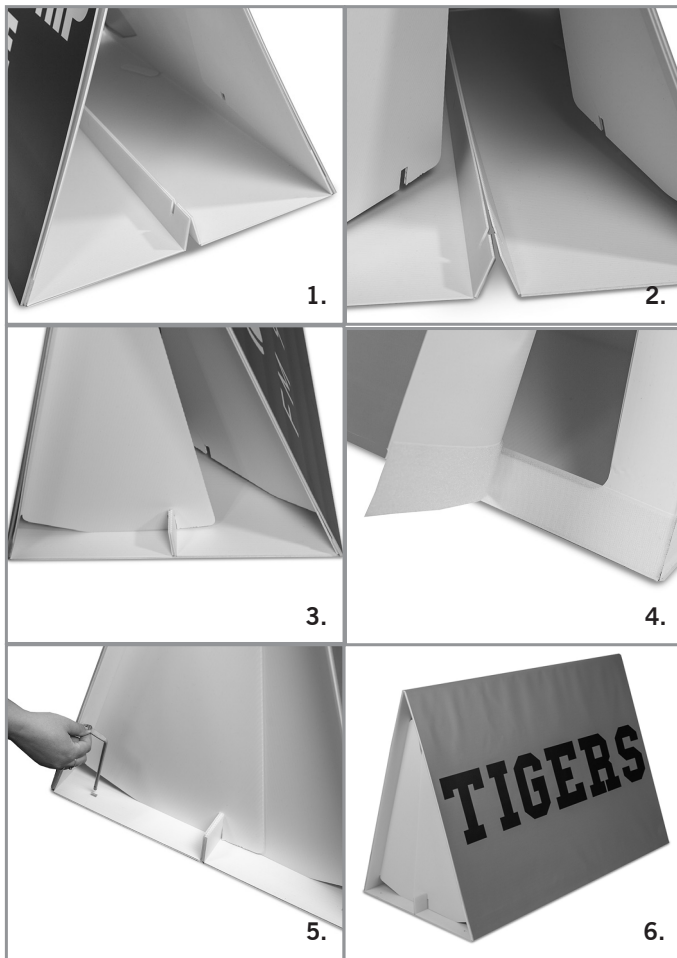
ASSEMBLY HARDWARE FOR VINYL/FABRIC BANNERS



- A. Vinyl or polyester banner
- B. (4) L-Stakes and connector pin
- C. A-frame

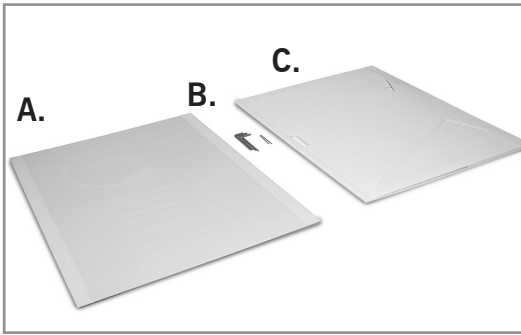


ASSEMBLY INSTRUCTIONS FOR VINYL/FABRIC BANNERS

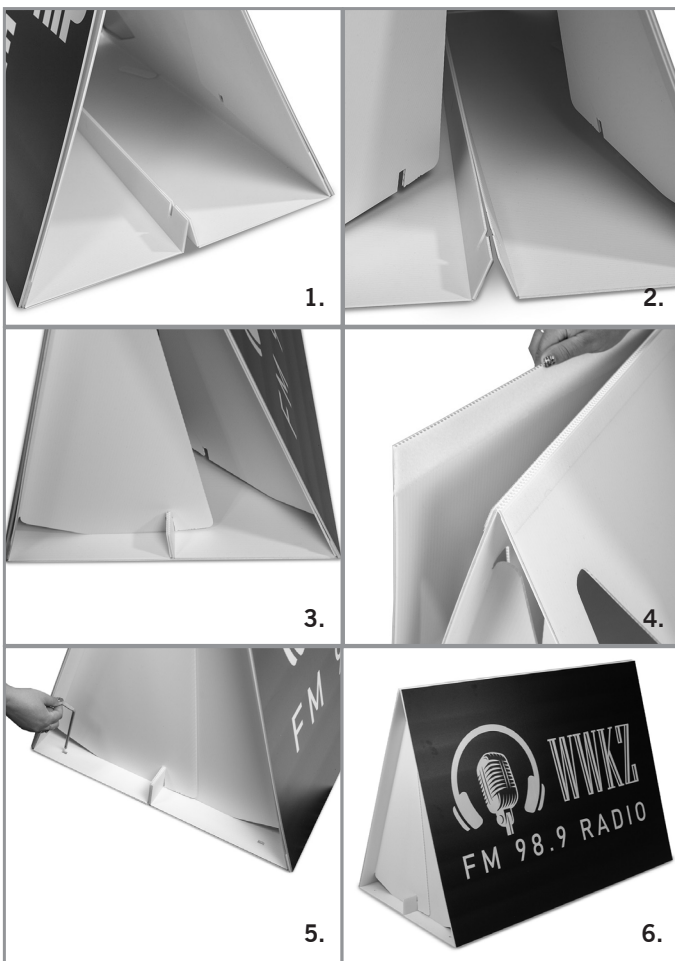


1. Unfold the flattened frame and set it up in the A-Frame shape with the two small tabs facing upward.
2. Pop the large triangular tabs out of the frame to bring them outward.
3. While securing the small tabs along the bottom of the frame together, pull each of the larger triangular tabs into the cutout notch to secure the fully assembled frame.
4. For vinyl or polyester banners, start by attaching the banner to the hook-and-loop fastener found at the bottom of each side of the frame. Start in the corner and work the hook-and-loop fastener together.
5. If placing the A-frame in the grass, secure the frame with the included L-stakes. Place one stake into each designated hole and carefully hammer the stakes into the ground.
6. Now the A-frame sign is ready to use.

HARDWARE FOR COROPLAST BANNERS

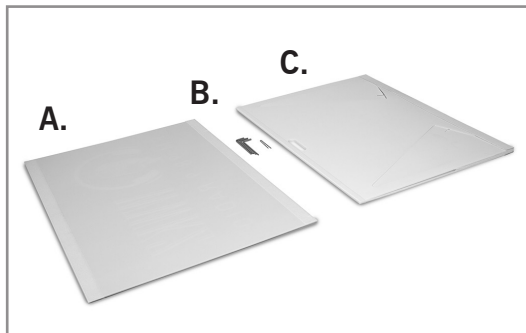


ASSEMBLY INSTRUCTIONS FOR COROPLAST BANNERS

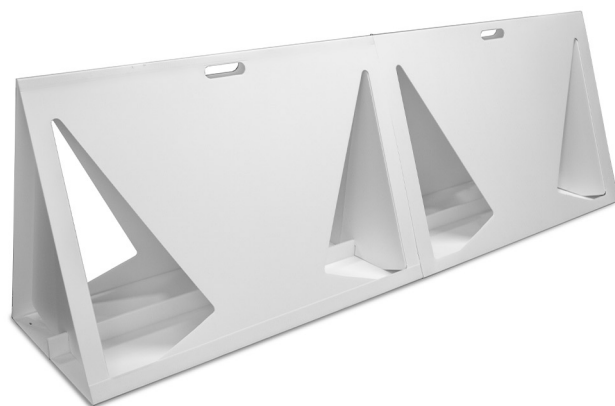


1. Unfold the flattened frame and set it up in the A-frame shape with the two small tabs facing upward.
2. Pop the large triangular tabs out of the frame to bring them outward.
3. While securing the small tabs along the bottom of the frame together, pull each of the larger triangular tabs into the cutout notch to secure the fully assembled frame.
4. Line the coroplast banner with one side of the a-frame. Start in one corner and gently push to attach the hook-and-loop together. Do the same thing for the other side.
5. If placing the A-frame in the grass, secure the frame with the included L-stakes. Place one stake into each designated hole and carefully hammer the stakes into the ground.
6. Now the A-frame sign is ready to use.

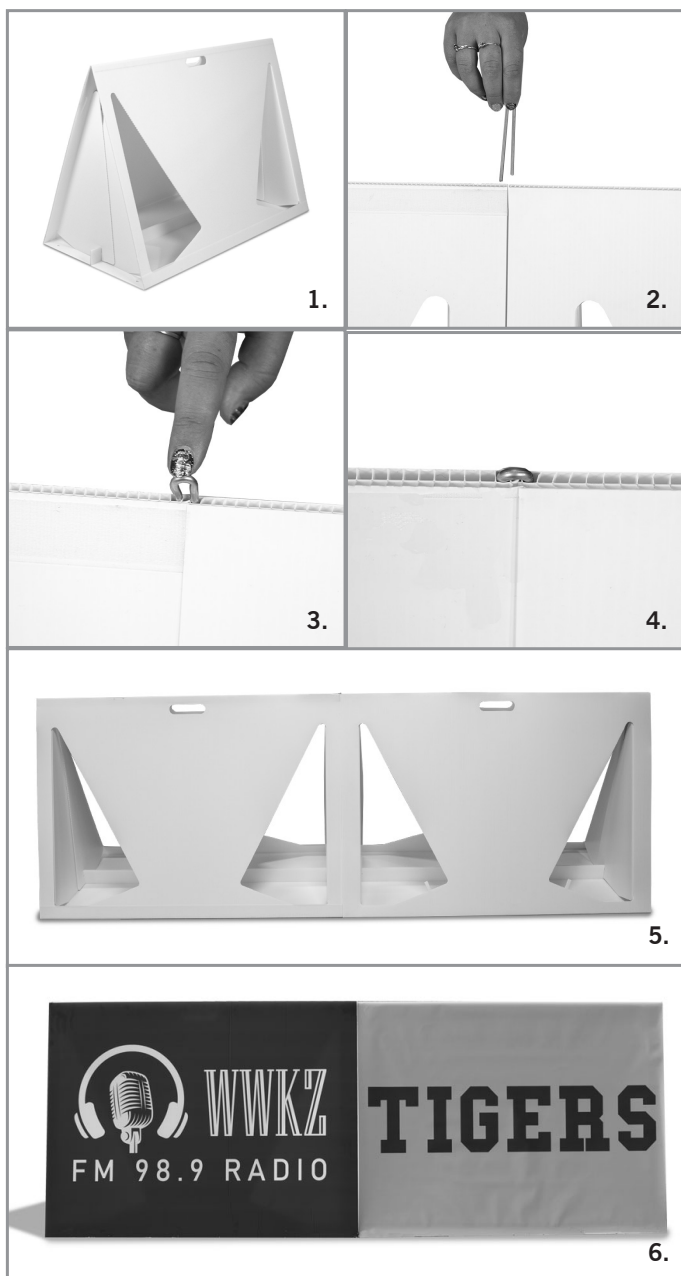
ASSEMBLY FOR CONNECTING TWO FRAMES TOGETHER



- A. Banner
- B. (4) L-Stakes and connector pin
- C. A-Frame



ASSEMBLY



1. To connect two frames together, first set up each frame. (You may want to remove the banner(s) for easier assembly.) If you are staking the frames in the ground, first stake all four sides of one frame. Then connect the frames and stake down the second frame's one side that is showing.
2. Take the connector pin, which is included, and line it up between the top of each frame.
3. Gently push the pin down into the frames.
4. Pin will stick up a little from the frames.
5. Now that the two frames are together and ready to use, add the banner(s) back on.
6. For vinyl or polyester banners, start by attaching the print to one side of the frame. Start in one corner and work the hook-and-loop together. Roll the banner over to the other side and repeat the process. For coroplast banners, line the coroplast banner with one side of the a-frame. Start in one corner and gently push to attach the hook-and-loop together. Do the same thing for the other side. Now the frames are ready to use.