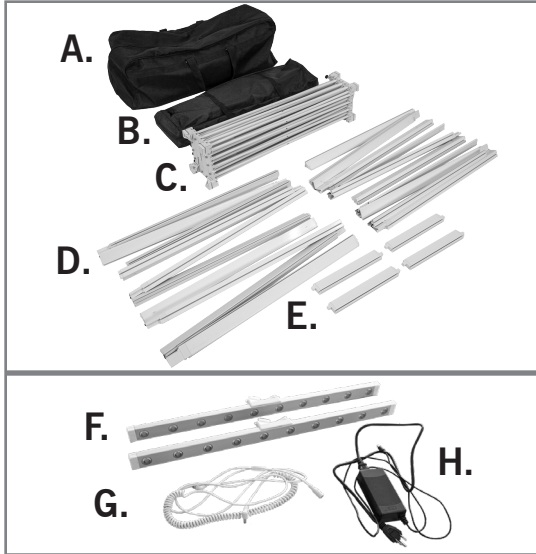
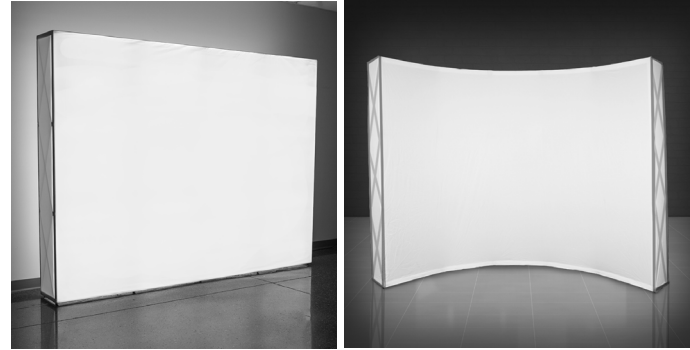


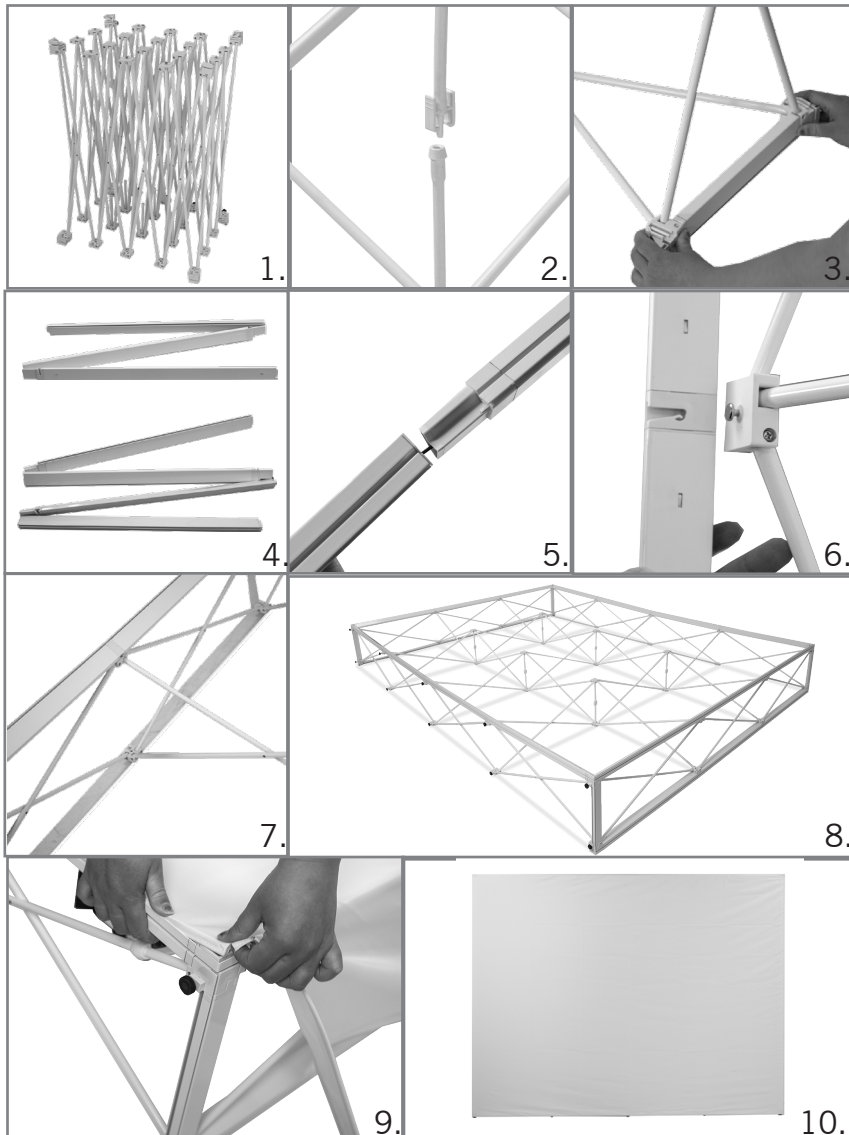
## ASSEMBLY HARDWARE



- A. CARRYING CASE
- B. BAG FOR CHANNEL BARS
- C. FRAME
- D. CHANNEL BARS
- E. SIDE CHANNELS
- F. LIGHT BAR
- G. CONNECTOR
- H. POWER SUPPLY



## FRAME ASSEMBLY AND PRINT ATTACHMENT

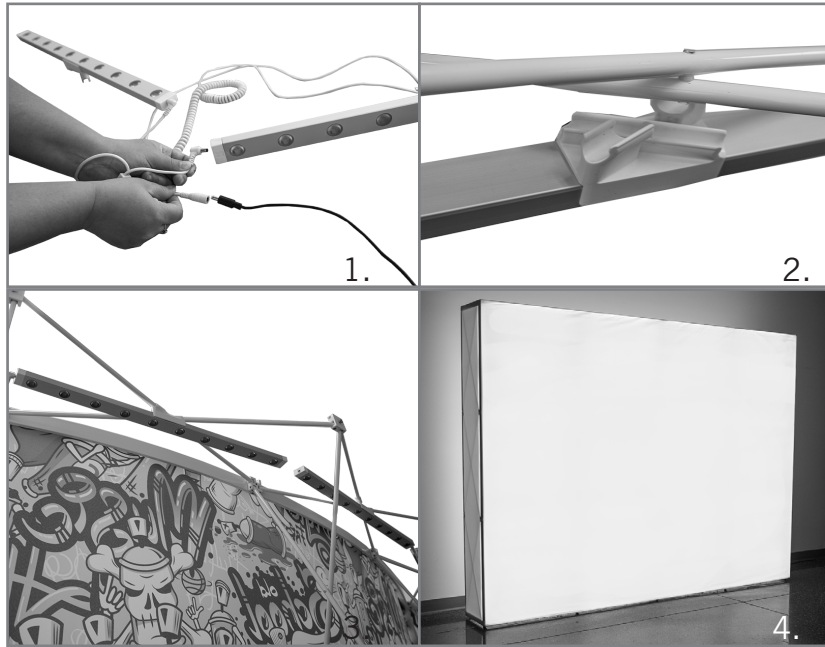


**NOTE:** ADDITIONAL PEOPLE MAY BE REQUIRED FOR LARGER DISPLAYS

### ASSEMBLY

1. Place fully collapsed frame on the ground and expand it outwards.
2. Connect all plastic connectors, located in the middle of the frame. Gently press each end together until the plastic tab "snaps" into place.
3. Place the short side channels at the top and bottom of the frame. (The short side of the frame)
4. Open up each channel bar. (For larger frames the longest channel bars go at the top and bottom)
5. Channel bars become one piece by connecting them at the bungee connection.
6. Connect the channel bars to the frame by sliding the channel bar on the pin that sticks out of the frame.
7. Once channel bars are connected to the frame, you will see the channel where the print installs into the frame.
8. Frame will have channel bars on the top, bottom, and sides.
9. Connect the print by sliding the silicone edging (sewn into the print), into the channel bars on the frame. We recommend starting in one corner and working your way around the frame.
10. Once the print is on the frame, stand the SEG Pop Up upright to add the lights.

## LED TUBE LIGHT INSTALLATION



1. If there are two or more light bars, connect them together with the connector.
2. Connect each LED light bar to either the top or the bottom of the frame.
3. Once you hear a click, the light bars will be secured into their position on the frame.
4. Plug the power supplies into a wall or power strip and your SEG Pop Up Backlit Display is ready to use