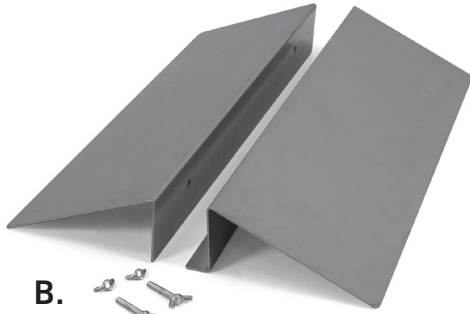


M MOUNT SIGN HOLDER

Assembly Instructions | R2.051722

ASSEMBLY HARDWARE

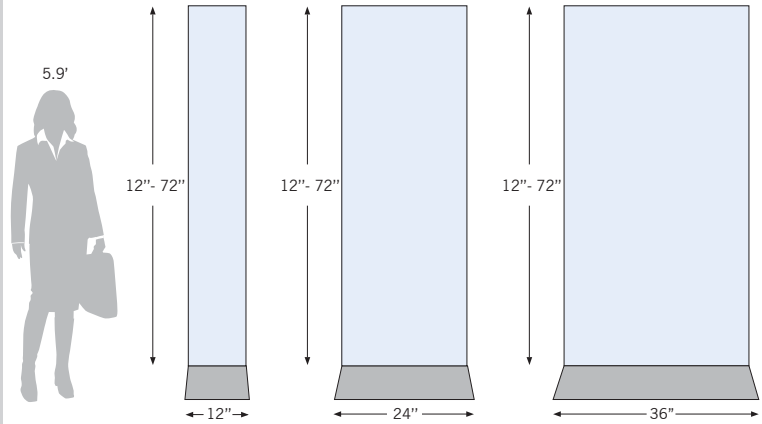
A.



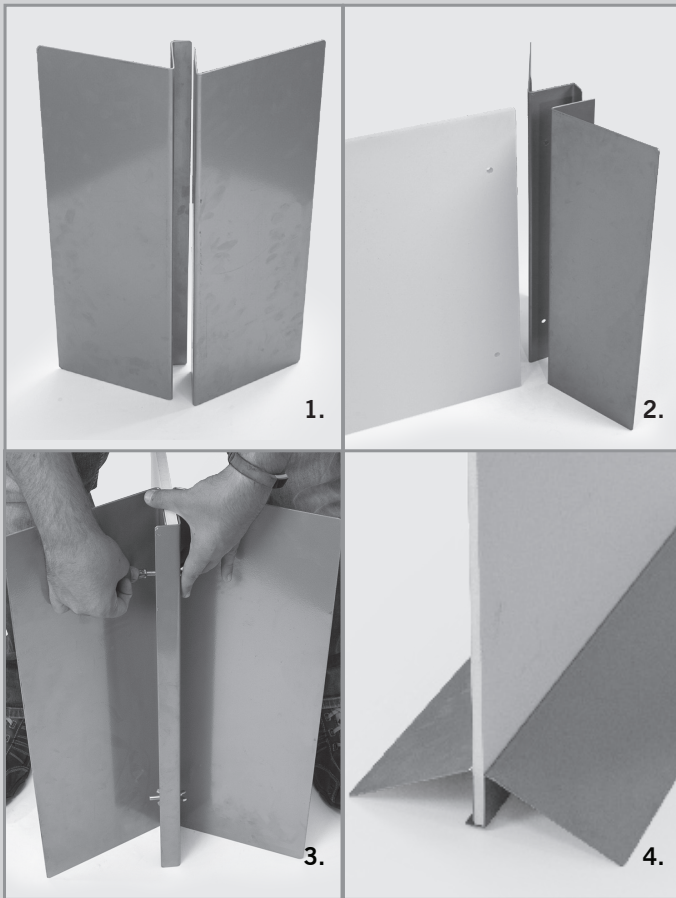
B.



A. M Mount Sign Holder
B. Bolts & Wing Nuts



ASSEMBLY



1. Lay the base on its side on the ground.
2. Line up the print with the base.
3. Insert the included bolts through the base and sign. Secure the bolts with the included wing nuts.
4. Stand the base up to display your sign.



The 12" base is recommended for 12" (W) x 12"-72" (H) signs. The 24" base is recommended for 24" (W) x 12"-72" (H) signs. The 36" base is recommended for 36" (W) x 12"-72" (H) signs. All M Mount Sign Holder bases accommodate up to 1" thick rigid signs.

