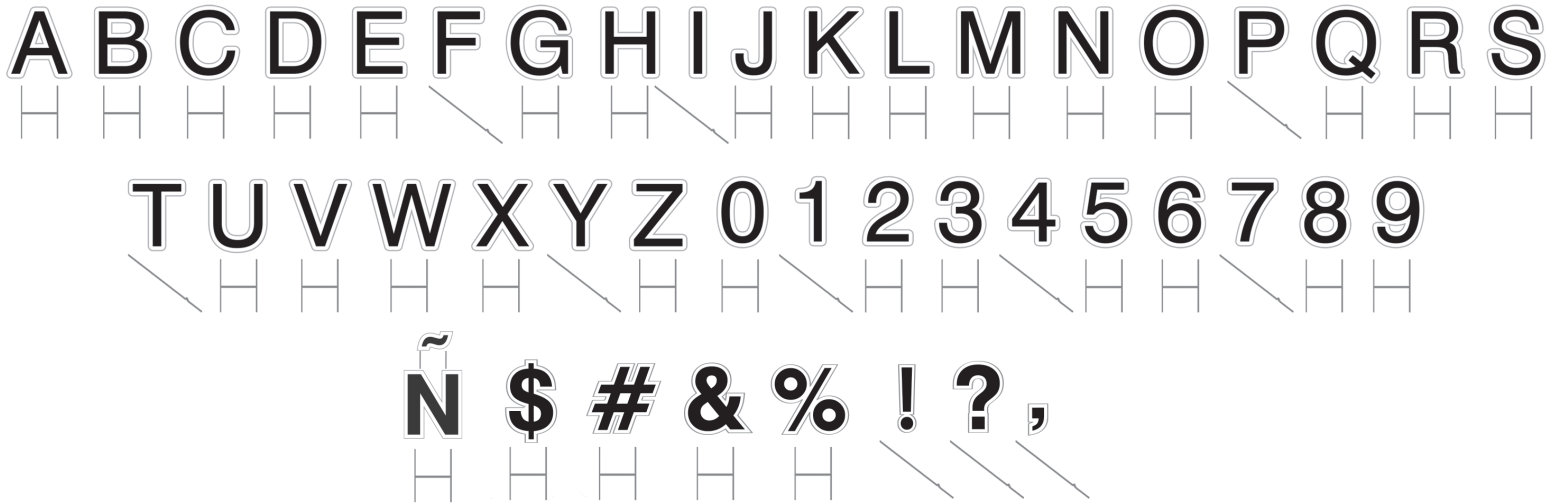
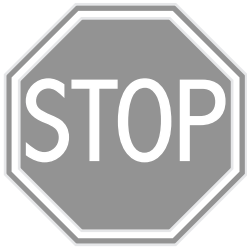


ASSEMBLY HARDWARE



EMOJIS



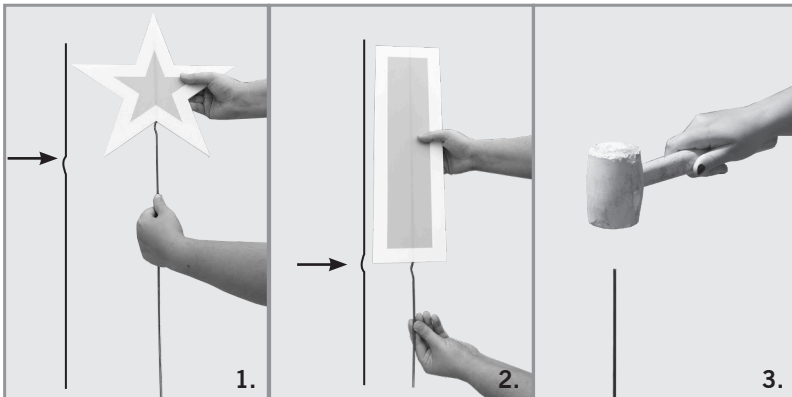
Measure the bottom of your emoji to choose the appropriate stake.



< 6" Wide = Straight Stake

> 6" Wide = H-Stake

STRAIGHT STAKE ASSEMBLY



Note: Straight stakes have a notch on one end that should be inserted into the characters to prevent them from spinning in the wind.

- 1. For shorter characters:** The notch should face up and insert into the bottom of the character.
- 2. For longer characters:** The notch should face down and insert into the bottom of the character.
3. Once the stake is inserted into the character, use a rubber mallet or a hammer to secure the stake into the ground.

H-STAKE ASSEMBLY



1. Insert the H-stake into the flutes on the bottom of the character.
2. Select the placement of the character.
3. Use your hands to push the H-stake into the ground until it is stable.

Occasionally, we may need to substitute stake types due to demand.
If you receive all straight stakes, then the letters that require an H-stake will receive 2 straight stakes instead.

ASSEMBLY HARDWARE



EMOJIS



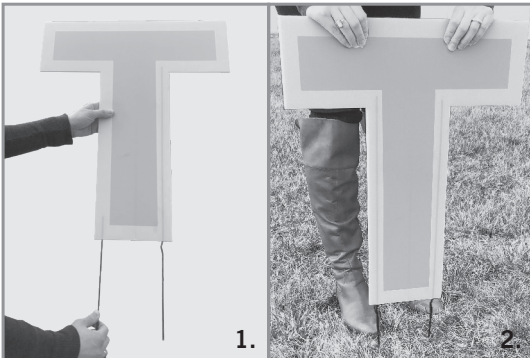
Measure the bottom of your emoji to choose the appropriate stake.



< 6" Wide = 2 Straight Stakes

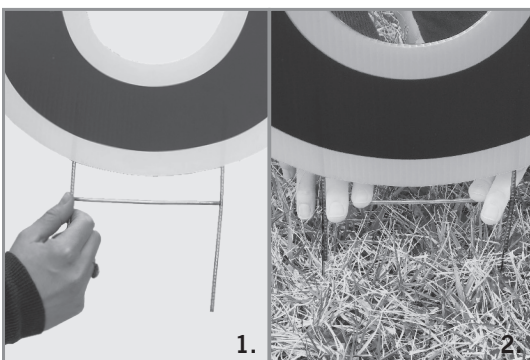
> 6" Wide = 1 H-Stake

STRAIGHT STAKE ASSEMBLY



1. Insert the straight stakes into the flutes on bottom of the character.
2. Select the placement of the character and press it into the ground until it is stable.

H-STAKE ASSEMBLY



1. Insert the H-stake into the flutes on the bottom of the character.
2. Select the placement of the character and press it into the ground until it is stable.

Occasionally, we may need to substitute stake types due to demand.
If you receive all straight stakes, then the letters that require H-stakes will receive double straight stakes instead.