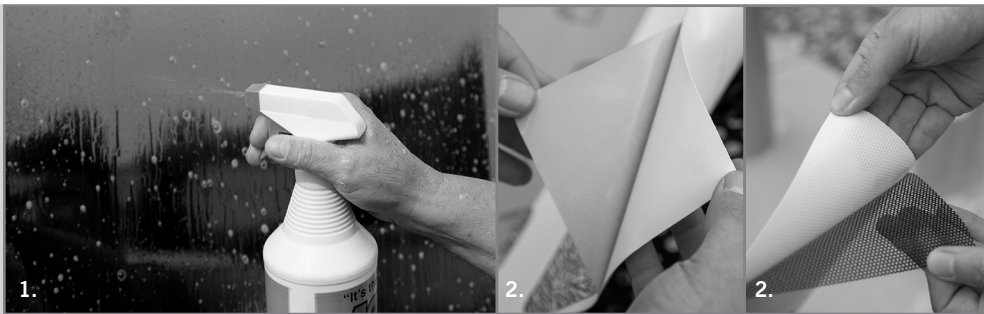




APPLICATION



1. Clean any dirt and debris off the window/wall/floor surface. Then wet the window/wall/floor with a mixed soap and water solution.
2. Remove the protective film from the back of the decal.



3. Carefully place the sticky end of the decal onto the window/wall/floor.
4. Smooth out all edges and air bubbles with a squeegee. Start at the center and work your way out.



5. Clean any excess water and soap from the window/wall/floor surface.



DISCLAIMER: Removable adhesive will become permanent if left on for 6 months or more.

