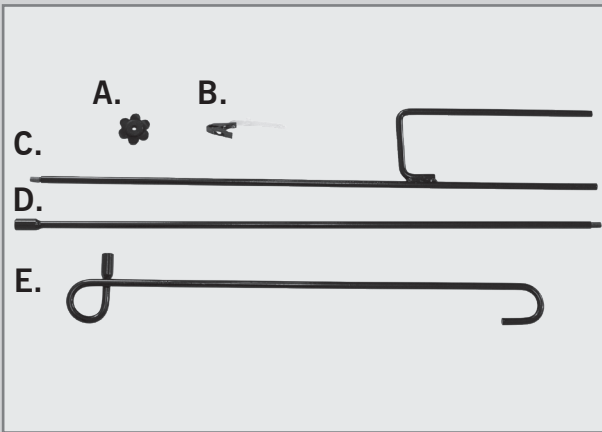


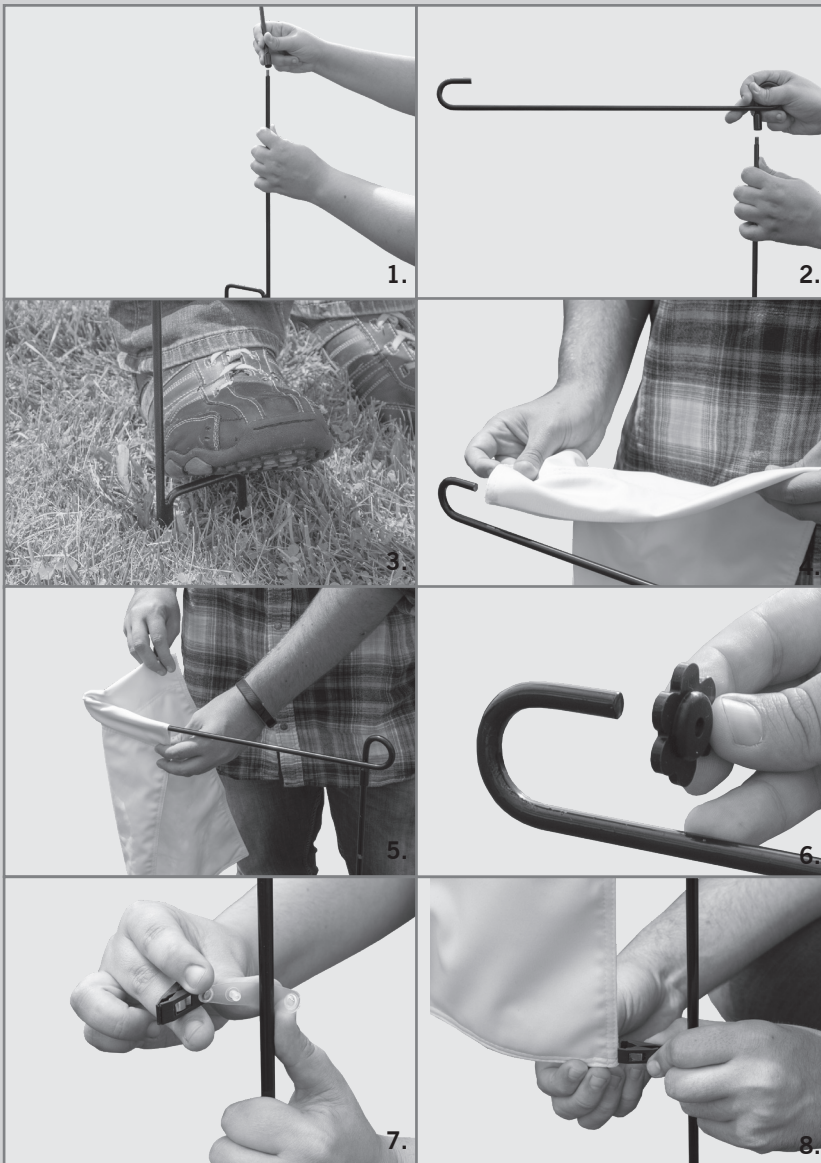
## ASSEMBLY HARDWARE



- A. Stopper
- B. Flag clip
- C. Bottom pole section
- D. Middle pole section
- E. Top pole section



## ASSEMBLY



1. Connect the D and C pole sections by inserting D's end into the C's top.
2. Connect D and E. The top section will be horizontal rather than vertical.
3. Stake the bottom of the hardware into the ground by pushing on the indent of C into the ground with a foot.
4. Slip the flag's sleeve over the curved open end of E.
5. Pull the flag sleeve through E until it is completely covering the pole.
6. Insert the stopper (A) into the curved end of E so the flag doesn't come off.
7. Place the flag clip (B) around the pole and secure it with the connectors. Make sure this is placed on the pole near the edge of the flag.
8. Clip the end of the flag to the flag clip.