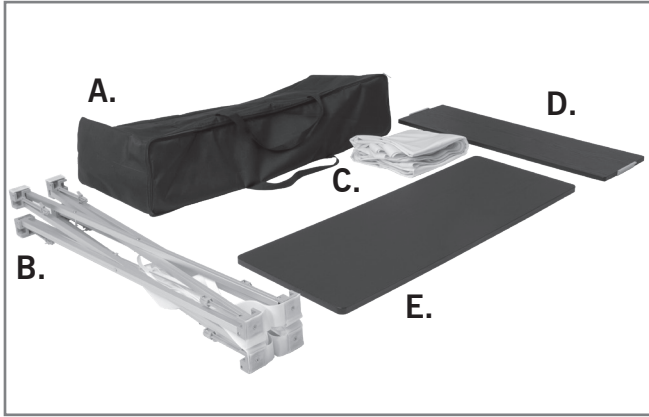


COUNTER FABRIC

Assembly Instructions | R1.080718

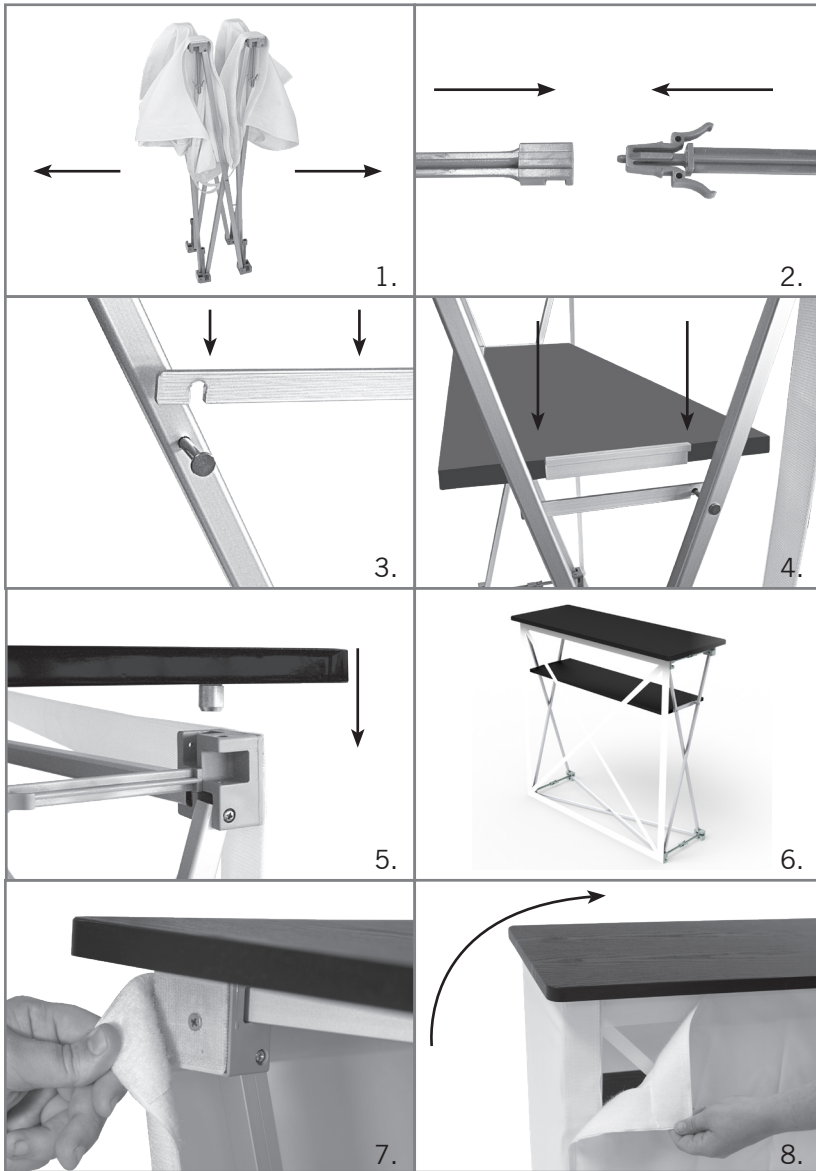
ASSEMBLY HARDWARE



- A. Carrying Case
- B. Frame
- C. Print
- D. Shelf
- E. Counter Top



ASSEMBLY



1. Pull apart the frame. If the print is attached, make sure it is untangled and that side parts are removed from frame.
2. Clasp all the connectors at the cross points.
3. Set into position and place left- and right-side arms over nails.
4. Slide the shelf into place and set brackets over the left- and right-side arms.
5. Place the counter on top of the frame and lock it into place in all four corners.
6. Display is set up.
7. If the print was already installed, pull it around the sides and attach it to the hook-and-loop fastener connection points. If the print was not installed, start connecting the hook-and-loop fastener at one top corner of the counter and align the print with frame, smoothing the print as you work around the display.
8. For a full wrap graphic, the print attaches to itself to enclose frame completely. Start installing the print by attaching the side with the sewn-on loop fastener on the front and back first. Wrap the print around the frame until the sewn-on hook fastener side connects to the sewn-on loop fastener side.

To disassemble, remove the print from the side of the frame (full wrap print from the back and sides of the frame), otherwise frame will not collapse, and damage might occur.



DISCLAIMER: User must read and observe assembly instructions. If this is not done correctly it may result in damage to the unit, injury, or death, and all warranties will be void. All warranties will be void if this product is used with any print or hardware not produced by us. Never sit or stand on the table. Do not place a direct heat source on or near the table surface. Do not use if display has visible structure damage. Weight limit countertop: 100.0lb evenly distributed. Weight limit shelf: 20.0lb evenly distributed. If weight is not evenly distributed, display might be susceptible to tipping, additional bottom weights to stabilize frame are highly recommended.

