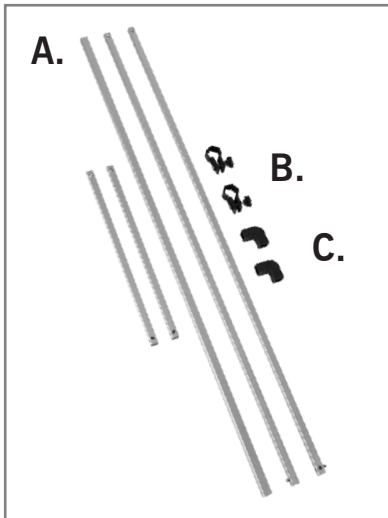


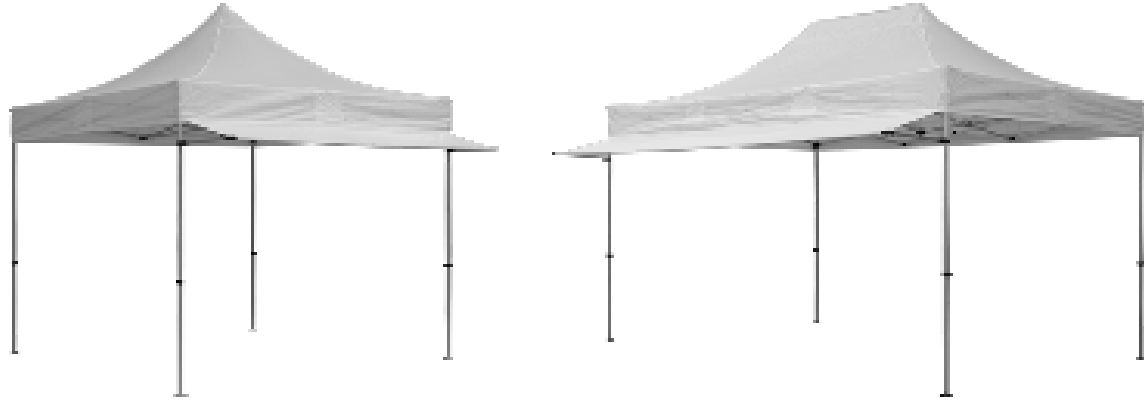
# EVENT TENT AWNING

R1.081617

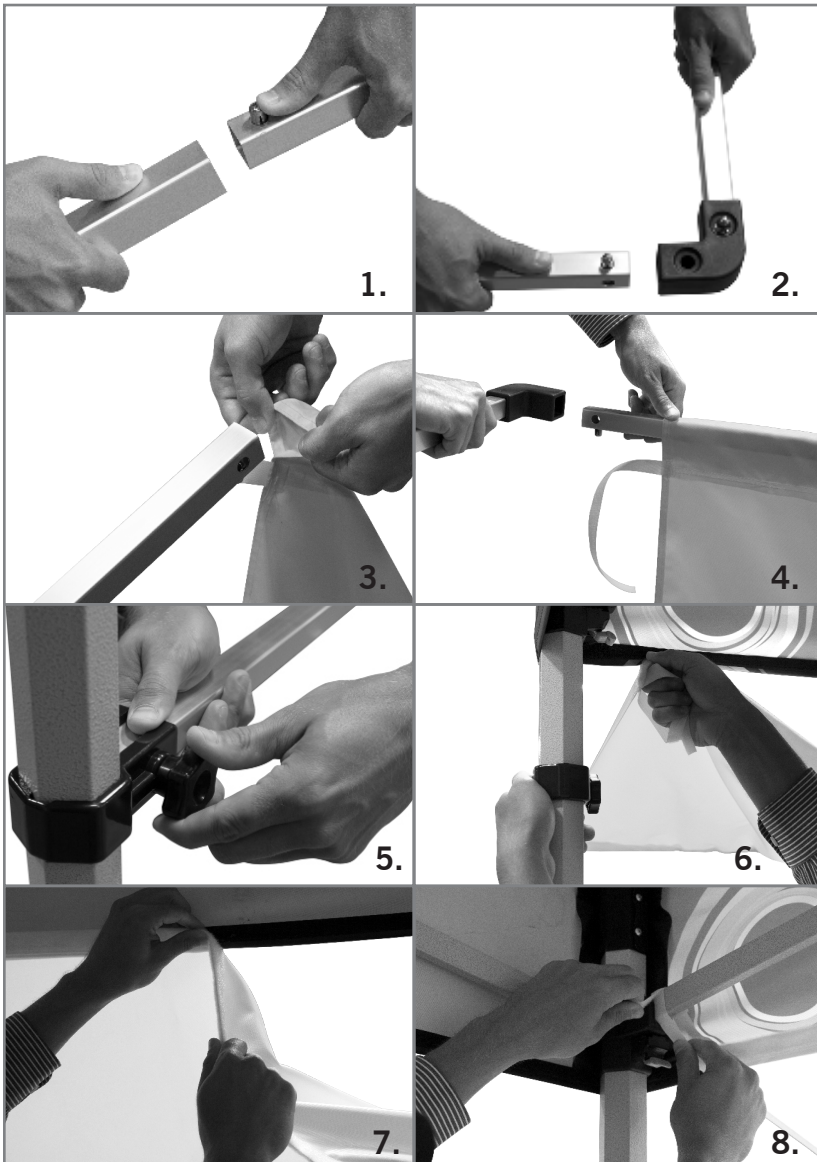
## ASSEMBLY HARDWARE



- A. Aluminum Poles
- B. Clamps
- C. 90° Connectors



## ASSEMBLY



1. Slide one support pole with the click button into the center support pole. Once the button snaps through the first hole, repeat this step with the second pole.
2. Connect the short aluminum poles to the 90° connectors. Connect one of these assembled pieces to the long support pole.
3. Slide the support pole through the print's pole sleeve.
4. Once the print is fully onto the support pole, attach the remaining pole with 90° connector.
5. Attach the clamps to the tent legs. Unscrew the knob completely from the clamp and slip the clamp around the tent leg. Place the support pole through the opening of the clamp. Place the tightening knob into the open hole and hand tighten the knob. Repeat this step with the second clamp and support pole.
6. Adjust the height of the clamp so it is approximately 6 inches below the bottom of the tent valance. Start in one corner and attach the awning's loop adhesive to the hook adhesive on the tent valance.
7. Continue until the awning is secured to the tent valance.
8. Secure the sides of the awning by wrapping the hook-and-loop adhesive tabs to the tent frame and support poles.