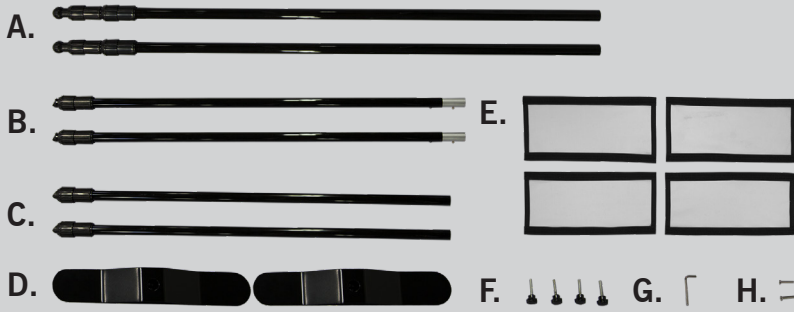


Tent Wall Backdrop Hardware Kit

Assembly Instructions | R1.083018

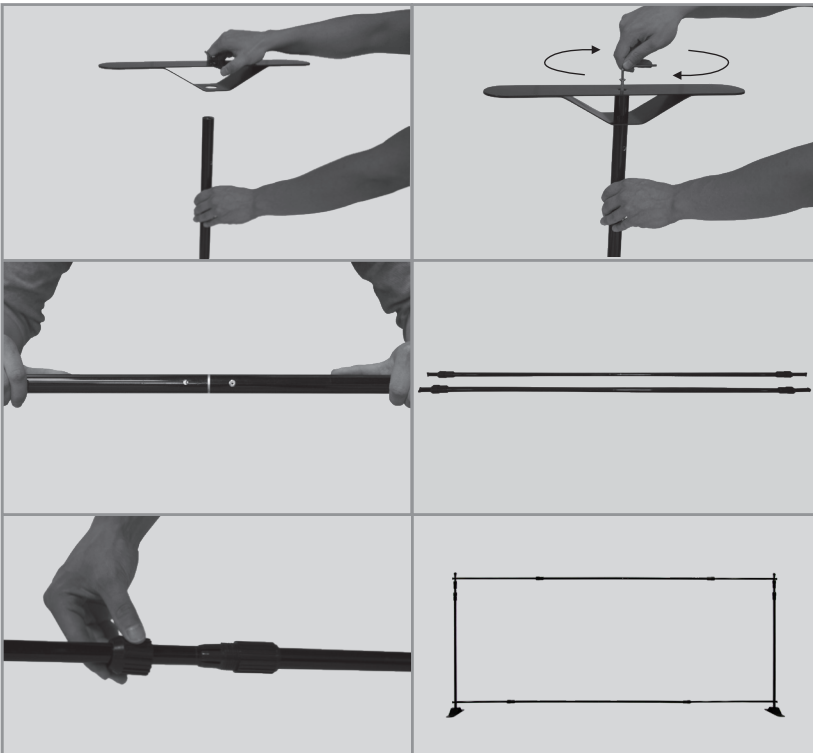
ASSEMBLY HARDWARE



- A. Vertical Aluminum Poles
- B. Male Horizontal Poles
- C. Female Horizontal Poles
- D. Metal Feet
- E. Hook-and-Loop Fasteners
- F. Plastic Screw Knobs
- G. Allen Wrench
- H. Flat Head Screws

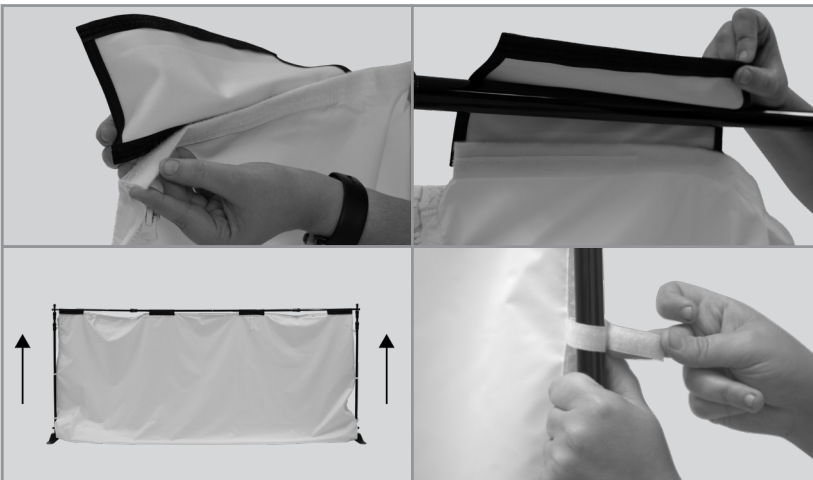


ASSEMBLY



NOTE – It's recommended two people assemble the display on a clean surface.

1. Assemble the vertical aluminum poles.
 - a. Insert a vertical aluminum pole (A) into the opening on one of the metal feet (D).
 - b. Place one of the flat head screws (H) into the underside of one of the metal foot.
 - c. Rotate clockwise with Allen wrench (G) to tighten.
 - d. Repeat for the other foot.
2. Length and assembly of horizontal poles.
 - a. Connect one half pole (B) to the other half pole (C).
 - b. Repeat for the other pole.
 - c. Expand the horizontal poles until they are 2 inches longer than tent wall width.
 - d. Secure the poles by tightening the notches at the determined points. Make sure both horizontal poles are the same length and assemble the frame.



3. Displaying and securing the print.
 - a. Once frame is assembled attach hook-and-loop fasteners to both top corners of print.
 - b. Connect the top corners to the pole and apply the remaining two hook-and-loop fasteners to the print and frame. Space them out evenly.
 - c. Extend vertically by loosening the vertical poles and expanding until desired height is achieved.
 - d. Tighten when print is taut.
 - e. Attach tabs on the side of print around the vertical poles for both sides.