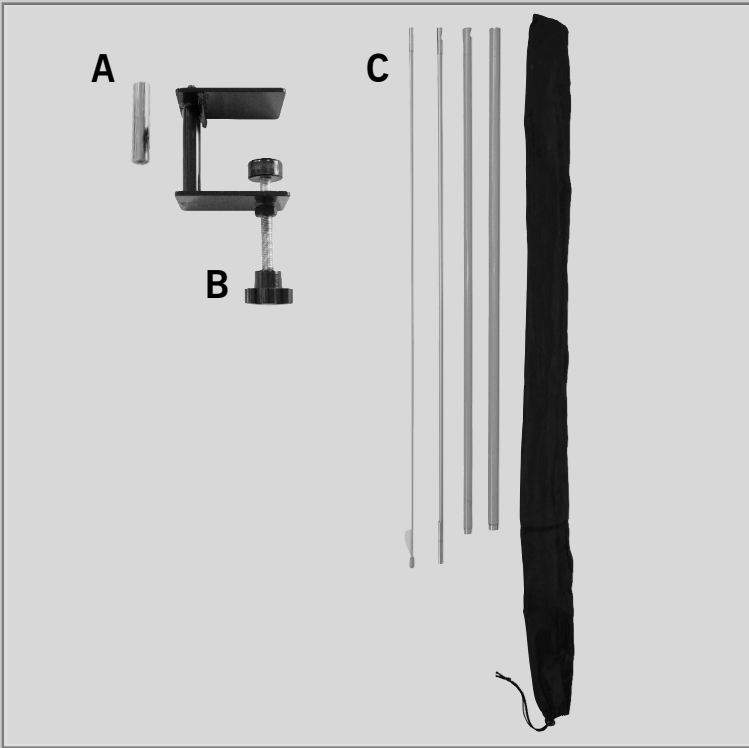


# Feather Flag with Table Clamp

R1.103117

## ASSEMBLY HARDWARE



- A. Thorn
- B. Clamp
- C. Pole Set with Economy Bag

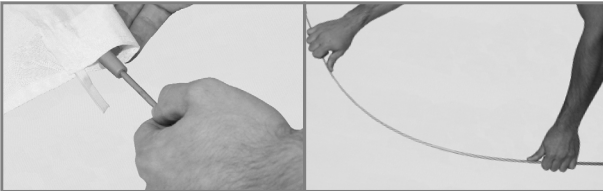
NOTE - THE AMOUNT OF POLES ARE DETERMINED BY THE SIZE OF THE FLAG SIZE.



## ASSEMBLY

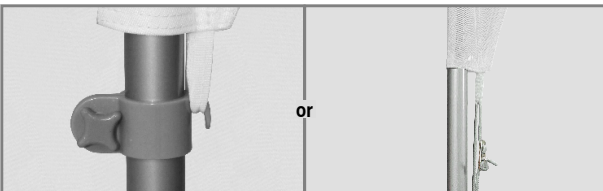


1. Assemble the pole set. The poles will be assembled from largest diameter pole on the bottom to the smallest diameter pole at the top. There is only one correct order the poles can be assembled.



2. Insert assembled pole set all the way (paying special attention to the top post) into the print pole sleeve.

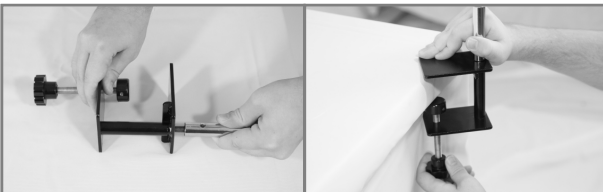
3. The flexible fiberglass pole will curve to the shape when the flag is fully taut. Pull the print and the pole sleeve downwards towards the clamp located on the bottom pole.



4. Tighten clamp at a location where the print will be fully taut. Pull print taut and attach tab to the clamp.

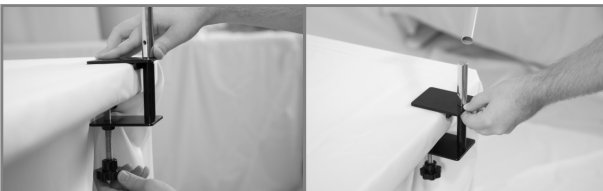
or

5. Attach bungee to tab on the flag and then pull the bungee cord and attach the spring snap to the fastener on the pole. Adjust the tensioner until the flag is taut.



6. Attach thorn to table clamp.

7. Put clamp around edge of table.



8. Once flush, tighten clamp.

9. Slide the bottom of the flag over the thorn.



This product is designed for indoor and outdoor use. When using outdoors, use only in no wind to very low wind conditions. Use only on tables that can support the setup conditions and weight of the entire display system. Allow enough clearance around flag/display system for free movement of display. The table clamp needs to be flush against the table when setup. User must read and observe assembly instructions and size recommendations for this product. If this is not done correctly, it may result in damage to the unit, injury or death, and all warranties will be void. All warranties will be void if this product is used with any flag/banner or hardware not produced by us. Additional restrictions might apply depending on display used with this clamp.

