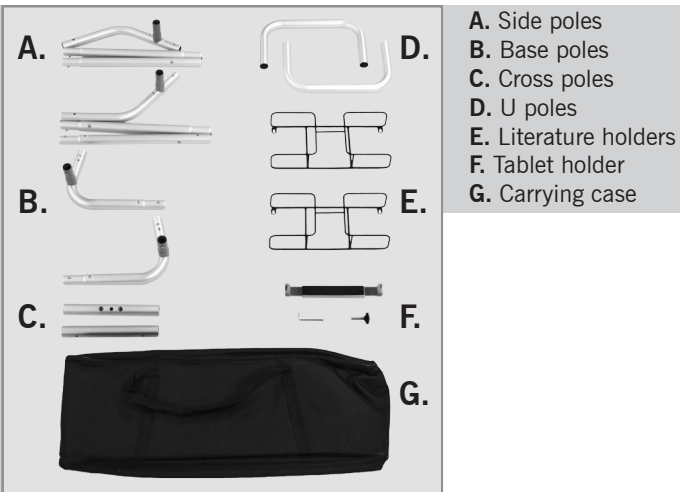
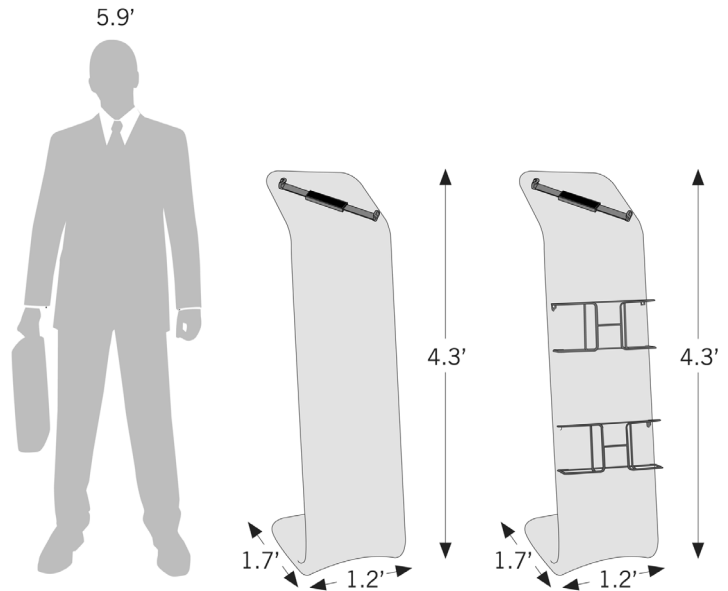


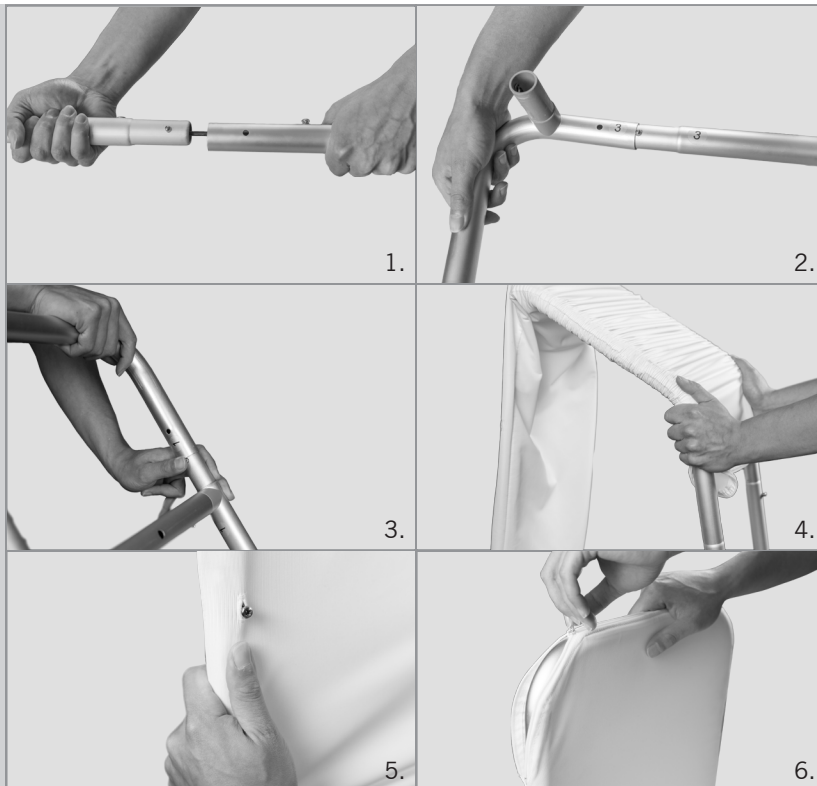
ASSEMBLY HARDWARE



- A. Side poles
- B. Base poles
- C. Cross poles
- D. U poles
- E. Literature holders
- F. Tablet holder
- G. Carrying case

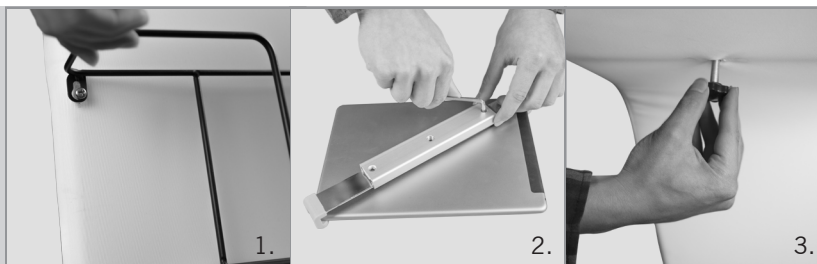


FRAME ASSEMBLY AND PRINT ATTACHMENT



NOTE: Frame pieces have numbered stickers placed on them. Matching stickers indicate pieces should go together.

1. Snap side pole (A) pieces together into the corresponding holes. Ensure buttons click into holes.
2. Insert the side poles (A) into the the base poles (B). Ensure buttons click into the holes. Then, attach the cross poles (C) to connect both side pieces. The cross pole with holes should be at the top, with the 3 holes facing up.
3. Connect the U poles (D) to the top and bottom of the frame, ensuring buttons click into the holes.
4. With the front of the print facing you and the opening at the bottom, slide the print over the entire frame.
5. Ensure holes left in print for literature holders and tablet holder are over appropriate spots on the frame.
6. Close print at the bottom by zipping it shut.



LITERATURE AND TABLET HOLDER ATTACHMENT

1. To attach the literature holders (E), take the Phillip's head screws and insert and tighten them into the frame. The insertion points will be indicated by holes in the print. Be sure not to tighten the entire way. Then, place the literature holder's hooks onto the screws.
2. First, install the tablet holder onto the tablet and then install on the frame. To install the tablet holder onto a tablet, use the included Allen wrench to loosen the tablet holder (F). Place it on the back of the tablet in a diagonal direction and tighten with the wrench.
3. To install on the frame, place the tablet on top of the print and secure it to the frame with the screw knob on the other side of the print.