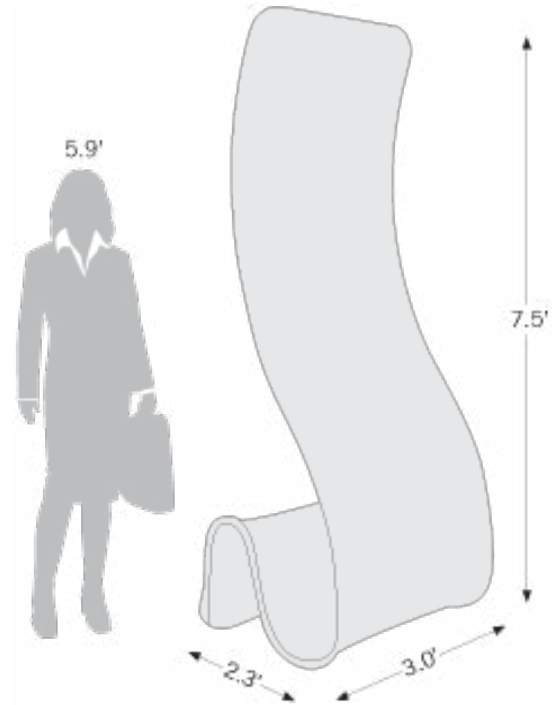
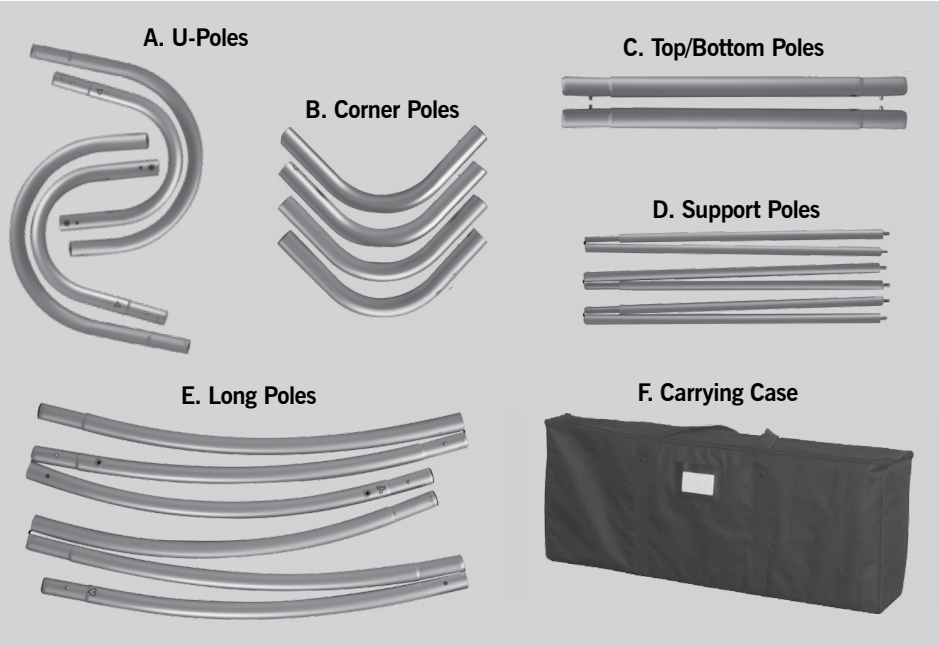


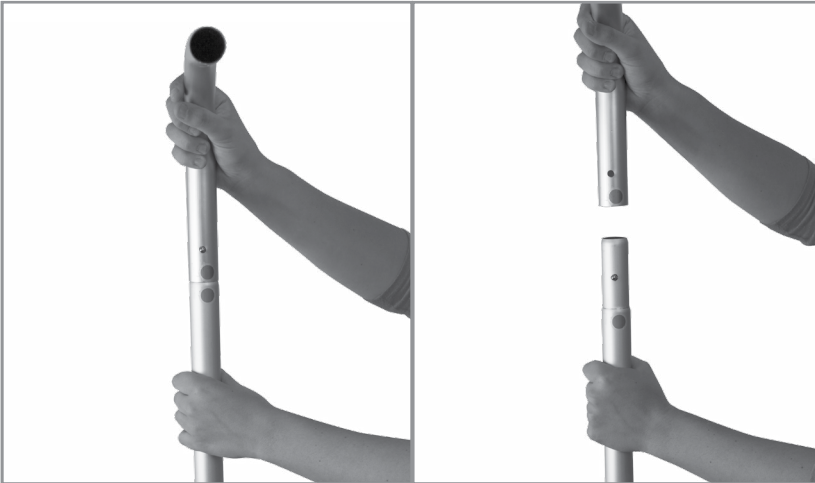
# Snake Display

R2.091814

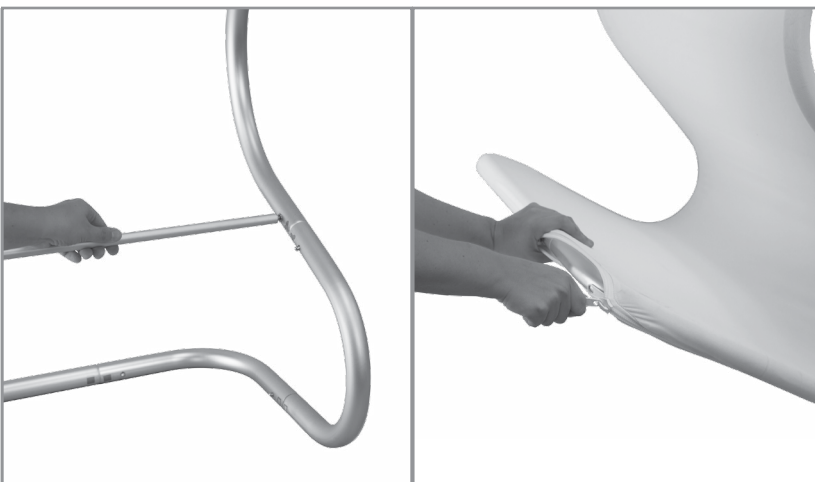
## ASSEMBLY HARDWARE



## ASSEMBLY



1. Remove from the carrying case all aluminum frame pieces and set them approximate to where you plan on placing the display. Leave the print in the bag for the time being so the print does not become dirty.
2. Each piece of the aluminum frame will have sticker(s) with a shape on them to indicate the connections. Pieces with the same shapes should be connected together. Example: the Top Pole connects to the Corner Poles. This is indicated by the hearts and circles shape stickers.
3. The frame connects using click button assembly. Place the piece with the button into the hole of the piece you want to connect. Press the button down and release when it slides into the hole. Push the piece with the hole down until the button clicks into place.



4. Repeat the steps above for all of the main frame pieces.
5. Once the outer frame has been connected, you can install the support bars in the appropriate locations according to the shape stickers. To install the support bars, simply screw the ends into the main frame.
6. The print covers the frame from the top down. You may want to seek help from another person for this part. Slide the zipper end over the entire frame. Once the entire frame has been covered by the print, you can zipper your print closed.
7. When disassembling, if you are unable to entirely push the button, push down the connected piece a little bit and try again.