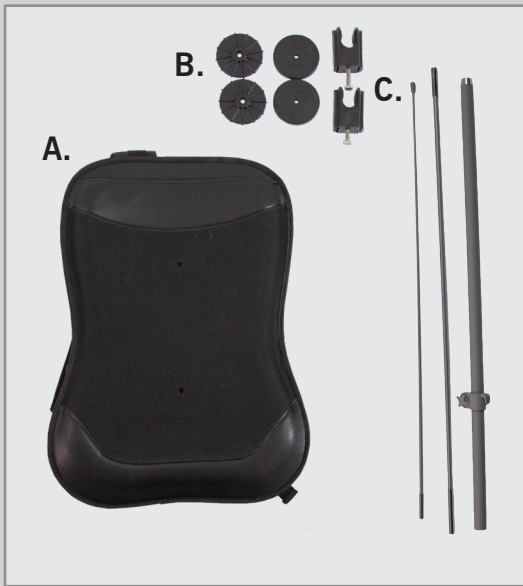


## ASSEMBLY HARDWARE

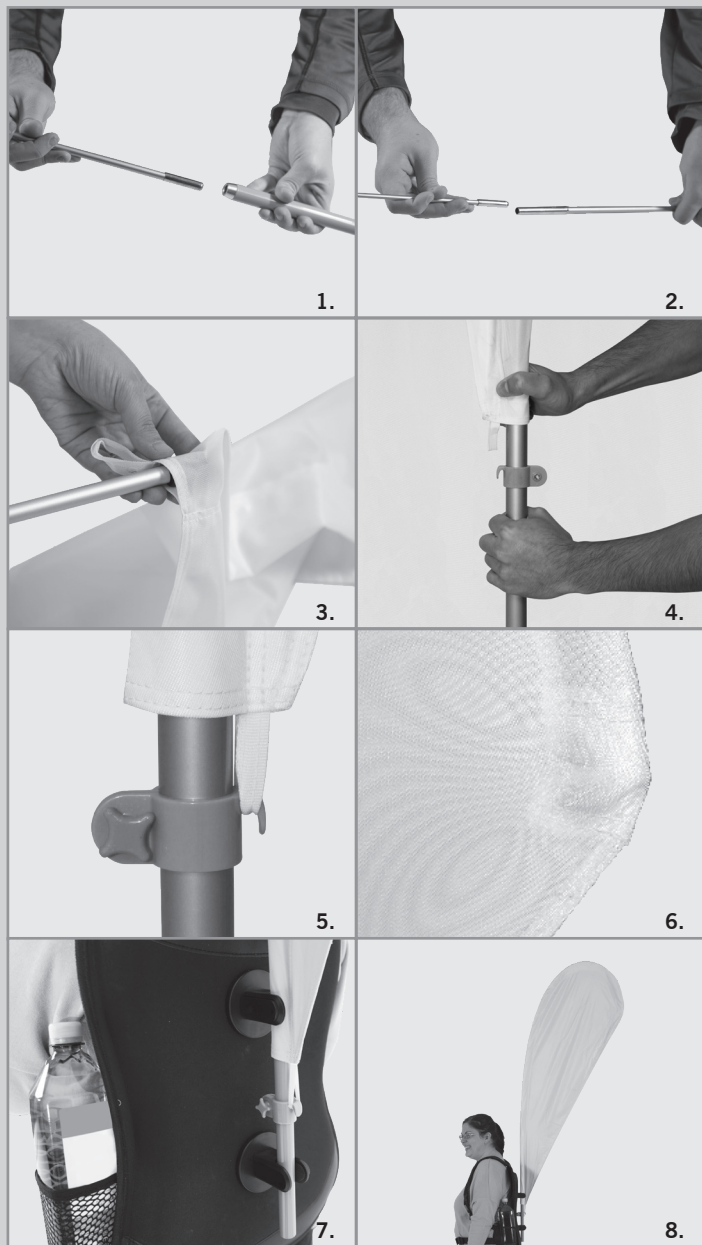


## BACKPACK ASSEMBLY



1. Ensure the bottom spacer and mounting peg are together.
2. Slide the mounting hardware inside the back of the backpack.
3. Line the pegs up with the holes.
4. Attach the top spacer.
5. Screw on the mounting bracket.
6. Ensure both mounting brackets are attached.

## WIND SAIL ASSEMBLY



1-2. Assemble the pole set. Connect the poles together with the smallest-diameter pole at the top and the largest-diameter pole at the bottom.

3. Slide the sleeve of the flag down the banner pole.

4. The flexible fiberglass pole will curve to the shape when the flag is fully taut. Pull the print and the pole sleeve downwards towards the clamp located on the bottom pole.

5. Tighten the clamp at a location where the print will be fully taut. Pull print taut and attach tab to the clamp.

6. Make sure the tip of the pole is fully inserted into the reinforced pole tip on the print.

7. Attach the flagpole to the backpack by pressing the pole into the back brackets.

8. Display your flag.